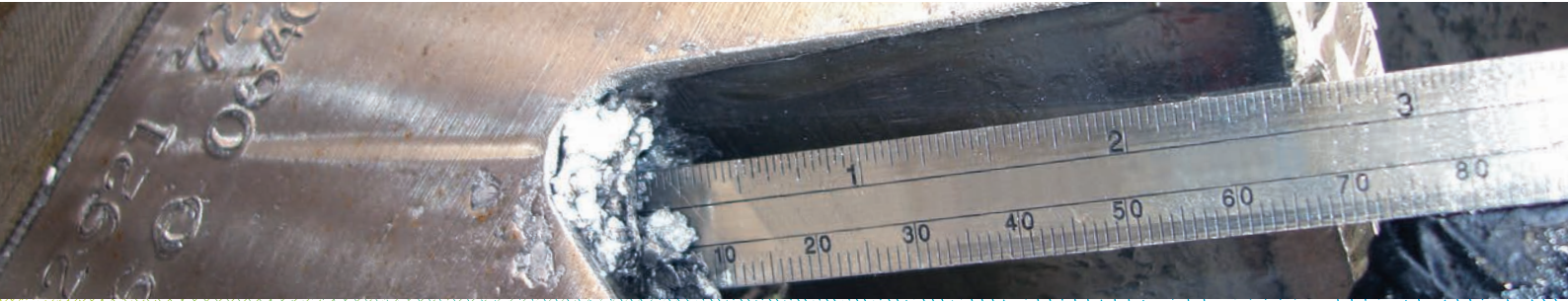


Grinding mill gear inspection



Energy lives here™

► Recommendations revealed in inspections help mills make the right changes to maximize their production and savings.

Description

Through this service, we conduct a basic grinding mill gear inspection of central grease, open gears and key lubrication points to seek early identification of abnormal conditions. Their timely correction can help prevent the costs associated with premature failures and increase production.

Approach

We work with you to:

- Schedule proper time for the grinding mill gear inspection
- Identify and follow the safety requirements to perform the inspection
- Interface with OEM to develop recommendations as appropriate
- Share best practices and outline opportunities for potential savings
- Document gear wear patterns and identify issues
- Document lubricant application systems (oiling pinion/spray bar)
- Complete service using proper safety techniques
- Adhere to Mobil Serv's global standardized procedures
- Prepare a report to document findings

Potential benefits



Optimized equipment uptime



Documented gear wear patterns and solutions



Enhanced safety practices



Minimized waste and environmental impact



Minimized lubricant consumption



Minimized maintenance and labor costs

Grinding mill gear inspection



Deliverable: The Engineering Service Report documents the grinding mill inspection and results. It contains recommendations for increasing safety, productivity and savings within the mill.

Common opportunity areas

- Lost mill production time
- Frequent, costly equipment maintenance
- Short equipment life
- Lubricant application system improvement
- Lubricant feed rate optimization
- Lubricant leakage identification

Safety, health and environment

Our field engineers are attuned to the hazards of handling, storing and using petroleum products. They strictly observe safety and environmental rules, as well as ExxonMobil and customer safety practices. They coordinate efforts through designated plant personnel verifying electrical and mechanical lockout and proper tagging prior to working on equipment, and providing recommendations to help reduce hazards.

Industrial
Lubricants



By helping you enhance equipment life and reliability — which minimizes maintenance costs and downtime — our expert services can help you achieve your safety, environmental care and productivity goals.